


Royal Porcelain

BONE CHINA | FINE CHINA | PORCELAIN | MAXADURA

by Royal Porcelain Public Company Limited

Head Office : 9th Floor, Mahatun Plaza Building 888/90-92 Ploenchit Road,

Pathumwan Bangkok 10330 Thailand. Tel : (662) 253-6823-38, Fax : (662) 254-4093-4 e-mail : info@royalporcelain.co.th



PHOTOGRAPHED AT : MANDARIN ORIENTAL BANGKOK



"The trademarks, logos, and service marks (collectively the "Trademarks") displayed on the Royal Porcelain's products or on publications is registered and/or unregistered Trademarks of Royal Porcelain Public Company Limited having its registered residence at Mahatun Plaza Bldg., 888/90-92 Ploenchit Road, Pathumwan Bangkok 10330 Thailand. All use of the Trademarks is governed directly by Royal Porcelain. No additional rights are granted by implication, estoppel, or otherwise. Any unauthorized use or exploitation of the Trademarks without prior written permission from Royal Porcelain Public Company Limited is strictly prohibited.

Text, images, arts, designs, content and all copyrightable works of this publication is the property of Royal Porcelain Public Company Limited and fully protected by Copyright Law and other restrictions in all territories and jurisdictions as applicable. Reproduction or exploitation by any means of any part of our copyrightable works without prior written permission from Royal Porcelain Public Company Limited is strictly prohibited".



Royal Porcelain

BONE CHINA | FINE CHINA | PORCELAIN | MAXADURA

ROYAL PORCELAIN PUBLIC COMPANY LIMITED

form **RETELA**



form RETELA

A combination of two civilizations in East Meet West, to open your vision and lead you to contemporary style. Using line and pattern of roman style, on the other hand, it is similar to traditional Chinese style in design of knob and handle. It looks like to combine two cultures and different style together on tableware named Retela. Round Rim Flat Plate, Round Coupe Plate or Square Plate could be used with the same hollowware to create variety in term of functional that complete for Retail and Hotel & Restaurant range.



All of our products passed the United States Food and Drug Administration (USFDA) in meeting with its international standards and safety regulations, related particularly to lead and cadmium releases.

Tip&Trick

Here are some easy tips you can follow to help ensure your Royal Porcelain tableware continues to serve your everyday gourmet for the longest time:

Hand-wash

- Liquid detergent is best recommended.
- Do not put too many plates in a sink at one time as this might cause scratches.
- Use tea/coffee stain remover to remove such stain.
- Use only soft sponge as metal pad can cause scratches or permanent marks on the surface.

Microwave Use

- Except for the metal or gold plated ware, all Royal Porcelain tableware are microwavable.

Machine-wash

- Do not overload the machine with plates.
- Use only the recommended machine-washed liquid detergent.
- All Royal Porcelain tableware is dishwasher-safe but gold or platinum decorated ware is recommended to be hand wash.

form RETELA

Items and Description

Size could be varied ± 2 percent
Capacity & Weight could be varied ± 10 percent



Royal Porcelain
BONE CHINA | FINE CHINA | PORCELAIN | MAXADURA



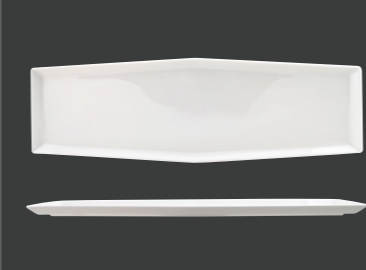
FLAT PLATTER
U 2807 ø 31.5 cm. (12³/₈") 835 g.
FLAT PLATE
U 2801 ø 27.0 cm. (10⁵/₈") 530 g.
U 2802 ø 24.5 cm. (9⁵/₈") 387 g.
U 2803 ø 22.0 cm. (8⁵/₈") 326 g.
U 2804 ø 19.5 cm. (7⁵/₈") 219 g.
U 2805 ø 16.5 cm. (6¹/₂") 135 g.



OVAL PLATTER
U 2810 30.5 X 38.5 cm.
(12" X 15¹/₈") 1,164 g.
U 2811 27.0 X 32.5 cm.
(10⁵/₈" X 12³/₄") 864 g.



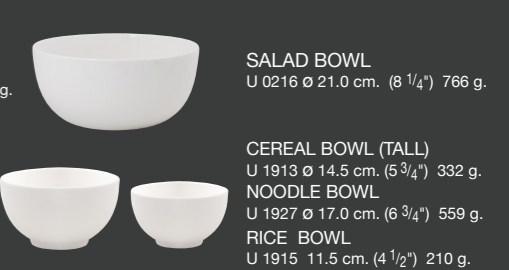
SOUP PLATE
U 0221 ø 21.5 cm. (8¹/₂") 456 g.



HEXA LONG TRAY
U 2824 14.5 X 45.0 cm.
(5³/₄" X 17³/₄") 706 g.
U 2825 11.5 X 38.0 cm.
(4¹/₂" X 15") 452 g.



PASTA PLATE
U 1903 ø 25.0 cm. (9⁷/₈") 605 g.



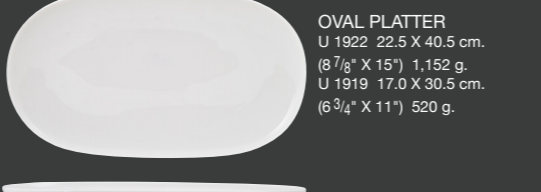
SALAD BOWL
U 0216 ø 21.0 cm. (8¹/₄") 766 g.



DEEP PLATE
U 2806 ø 23.5 cm. (9¹/₄") 407 g.



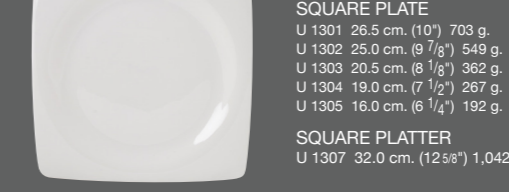
OVAL RIM PLATE
U 2837 20.0 X 14.5 cm.
(7⁷/₈" X 5³/₄") 276 g.



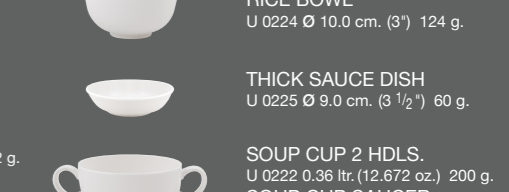
OVAL PLATTER
U 1922 22.5 X 40.5 cm.
(8⁷/₈" X 15") 1,152 g.
U 1919 17.0 X 30.5 cm.
(6³/₄" X 11") 520 g.



OVAL LONG TRAY
U 1933 15.0 X 45.0 cm.
(5⁷/₈" X 17³/₄") 705 g.
U 1934 12.0 X 38.0 cm.
(4³/₄" X 15") 466 g.



SQUARE PLATE
U 1301 26.5 cm. (10") 703 g.
U 1302 25.0 cm. (9⁷/₈") 549 g.
U 1303 20.5 cm. (8¹/₈") 362 g.
U 1304 19.0 cm. (7¹/₂") 267 g.
U 1305 16.0 cm. (6¹/₄") 192 g.



RICE BOWL
U 0224 ø 10.0 cm. (3") 124 g.



GOURMET PLATE
U 2809 ø 28.5 cm. (11¹/₄") 716 g.



OVAL PLATE
U 2812 16.5 X 20.5 cm.
(6¹/₂" X 8¹/₈") 254 g.



OVAL PLATE / PICKLE DISH
U 1921 13.0 X 22.5 cm.
(5¹/₈" X 8³/₄") 283 g.



RECTANGULAR PLATTER
U 1308 27.0 X 39.5 cm.
(10⁵/₈" X 15¹/₂") 1,238 g.
U 1309 22.5 X 32.5 cm.
(8⁷/₈" X 12⁷/₈") 736 g.



DEEP PLATE
U 1306 23.0 cm. (9¹/₈") 460 g.



CONDIMENT TRAY
U 2822 14.5 X 19.5 cm.
(5³/₄" X 7") 163 g.



CEREAL BOWL (LOW)
U 1912 ø 19.0 cm. (7¹/₂") 432 g.



PASTA PLATE
U 0149 ø 30.5 cm. (12") 952 g.



COFFEE POT WITH LID
U 2829/L 1.20 ltr. (42.24 oz.) 733 g.
U 2816/L 0.60 ltr. (21.12 oz.) 473 g.



PICKLE DISH
U 1328 13.5 X 21.0 cm.
(5" X 8¹/₄") 262 g.



SALAD BOWL
U 1322 21.5 cm. (8¹/₂") 634 g.



CEREAL BOWL
U 1323 15.5 cm. (6¹/₈") 290 g.

FRUIT BOWL
U 1324 14.0 cm. (5¹/₂") 235 g.

SALAD BOWL
U 2836 16.5 cm. (6¹/₂") 336 g.

MUG
U 2831 0.35 ltr. (12.32 oz.) 212 g.

MUG
U 0220 0.35 ltr. (12.32 oz.) 213 g.

COFFEE CUP
U 0201 0.20 ltr. (7.04 oz.) 130 g.
U 0202 0.25 ltr. (8.8 oz.) 151 g.

COFFEE CUP SAUCER
U 0204 ø 15.5 cm. (6¹/₈") 181 g.

COFFEE CUP
U 2834 0.91 ltr. (6.68 oz.) 116 g.

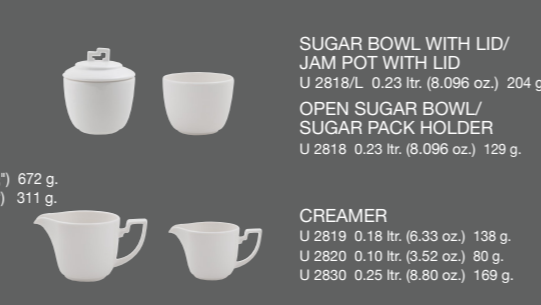
COFFEE CUP SAUCER
U 2835 ø 15.5 cm. (6¹/₈") 159 g.



FLAT PLATE
U 1901 ø 28.0 cm. (11¹/₈") 766 g.
U 1935 ø 25.0 cm. (9⁷/₈") 560 g.
U 1902 ø 21.5 cm. (8¹/₂") 407 g.
U 1936 ø 19.5 cm. (7⁵/₈") 313 g.
U 1929 ø 17.0 cm. (6³/₄") 227 g.



RIM DEEP PLATE
U 0148 ø 27.0 cm. (10⁷/₈") 672 g.
U 0150 ø 20.0 cm. (7⁷/₈") 311 g.



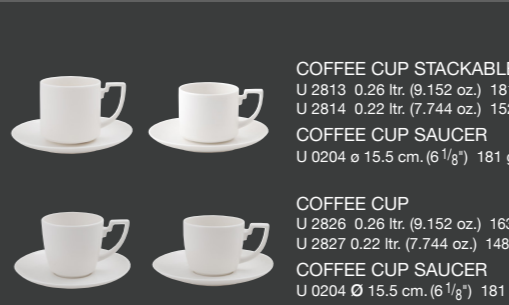
**SUGAR BOWL WITH LID/
JAM POT WITH LID**
U 2818/L 0.23 ltr. (8.096 oz.) 204 g.

**OPEN SUGAR BOWL/
SUGAR PACK HOLDER**
U 2818 0.23 ltr. (8.096 oz.) 129 g.

CREAMER
U 2819 0.18 ltr. (6.33 oz.) 138 g.
U 2820 0.10 ltr. (3.52 oz.) 80 g.
U 2830 0.25 ltr. (8.80 oz.) 169 g.



RECTANGULAR PLATE
U 1920 22.0 X 26.5 cm.
(8⁵/₈" X 10") 717 g.

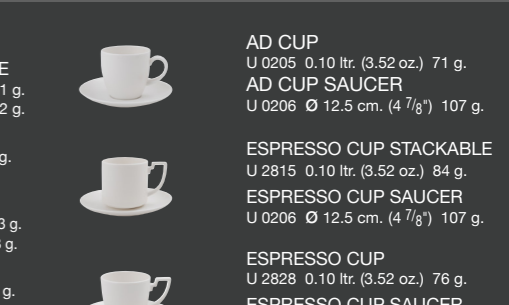


COFFEE CUP STACKABLE
U 2813 0.26 ltr. (9.152 oz.) 181 g.
U 2814 0.22 ltr. (7.744 oz.) 152 g.

COFFEE CUP SAUCER
U 0204 ø 15.5 cm. (6¹/₈") 181 g.

COFFEE CUP
U 2826 0.26 ltr. (9.152 oz.) 163 g.
U 2827 0.22 ltr. (7.744 oz.) 148 g.

COFFEE CUP SAUCER
U 0204 ø 15.5 cm. (6¹/₈") 181 g.



AD CUP
U 0205 0.10 ltr. (3.52 oz.) 71 g.

AD CUP SAUCER
U 0206 ø 12.5 cm. (4⁷/₈") 107 g.

ESPRESSO CUP STACKABLE
U 2815 0.10 ltr. (3.52 oz.) 84 g.

ESPRESSO CUP SAUCER
U 0206 ø 12.5 cm. (4⁷/₈") 107 g.

ESPRESSO CUP
U 2828 0.10 ltr. (3.52 oz.) 76 g.

ESPRESSO CUP SAUCER
U 0206 ø 12.5 cm. (4⁷/₈") 107 g.





■ Coffee Cup & Saucer Stackable



■ Condiment Set



■ Cereal Bowl & Oval Plate