



Royal Porcelain[®] ©
MAXADURA



ROYAL PORCELAIN PUBLIC COMPANY LIMITED

HEAD OFFICE : 9th Floor, MAHATUN PLAZA BUILDING 888/90-92 PLOENCHIT ROAD, PATHUMWAN, BANGKOK 10330 THAILAND.
TEL : (662) 253-6823-38, FAX : (662) 254-4093-4 , (662) 251-1971 www.royalporcelain.co.th e-mail : info@royalporcelain.co.th

Silk

"The trademarks, logos, and service marks (collectively the "Trademarks") displayed on the Royal Porcelain's products or on publications is registered and/or unregistered Trademarks of Royal Porcelain Public Company Limited having its registered residence at Mahatun Plaza Bldg., 888/90-92 Ploenchit Road, Pathumwan Bangkok 10330 Thailand. All use of the Trademarks is governed directly by Royal Porcelain. No additional rights are granted by implication, estoppel, or otherwise. Any unauthorized use or exploitation of the Trademarks without prior written permission from Royal Porcelain Public Company Limited is strictly prohibited.
Text, images, arts, designs, content and all copyrightable works of this publication is the property of Royal Porcelain Public Company Limited and fully protected by Copyright Law and other restrictions in all territories and jurisdictions as applicable. Reproduction or exploitation by any means of any part of our copyrightable works without prior written permission from Royal Porcelain Public Company Limited is strictly prohibited".

www.royalporcelain.co.th

Silk

Presenting a new tableware collection from Royal Porcelain .

The concept for this collection derives from the beauty of the silk fabric that has a remarkable texture appearance. The weaving texture of silk that gives the feeling of soft and tenderness is shown here as a relief on " Silk Collection " .

The shape itself is a cross between Western and Asian influence suitable for all your dining occasion.

From now on your delightful dining experience will be " Smooth and Vibrant as Silk " .

Royal Porcelain's products are made to stringent quality and safety standards suitable for the consumers and free of any environmental concerns.

The company received approval from the United States Foods and Drugs Administration <US FDA> in meeting with its rigid international standards and safety systems related particularly to lead and cadmium release.



All of our products passed the United States Food and Drug Administration (USFDA) in meeting with its international standards and safety regulations, related particularly to lead and cadmium releases.

Tip&Trick

Here are some easy tips you can follow to help ensure your Royal Porcelain tableware continues to serve your everyday gourmet for the longest time:

Hand-wash

Liquid detergent is best recommended. Do not put too many plates in a sink at one time as this might cause scratches. Use tea/coffee stain remover to remove such stain. Use only soft sponge as metal pad can cause scratches or permanent marks on the surface.

Machine-wash

Do not overload the machine with plates. Use only the recommended machine-washed liquid detergent. All Royal Porcelain tableware is dishwasher-safe but gold or platinum decorated ware is recommended to be hand wash.

Microwave Use

Except for the metal or gold plated ware, all Royal Porcelain tableware are microwavable.



Round Coupe Plate

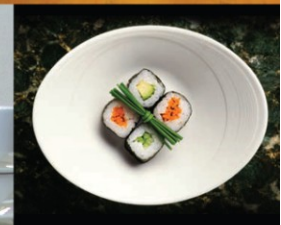
Coffee Cup & Saucer Stackable



Round Deep Plate



Dinner set



Round Flat Plate

Special Thanks : Richmond Hotel

Form : Silk

Items and Description

Size could be varied : 2 percent
Capacity & Weight could be varied : 10 percent

* Relief Profile is applied by print - decal



* RECTANGULAR DISH
M 9130 13.0 X 23.0 cm.
(5 1/8" X 9") 493 g.



* RECTANGULAR PLATE
M 9131 16.5 X 27.0 cm.
(6 1/2" X 10 3/4") 720 g.



* SQUARE PLATE
M 9132 28.0 X 28.0 cm.
(11 1/8" X 11 1/8") 1,560 g.



* SQUARE PLATE
M 9133 15.0 X 15.0 cm.
(5 7/8" X 5 7/8") 277 g.
M 8417 25.0 X 25.0 cm.
(9 7/8" X 9 7/8") 1,120 g.



ROUND FLAT PLATTER (THICK RIM)
M 9367 31.0 cm. (12 1/4") 1,126 g.



ROUND FLAT PLATE (THICK RIM)
M 9368 28.0 cm. (11 1/8") 870 g.
M 9369 26.0 cm. (10 1/4") 765 g.
M 9370 21.0 cm. (8 1/4") 400 g.
M 9371 19.0 cm. (7 1/2") 296 g.
M 9372 16.0 cm. (6 1/4") 230 g.



ROUND FLAT PLATTER
M 9376 31.0 cm. (12 1/4") 1,110 g.



ROUND FLAT PLATE
M 9377 27.5 cm. (10 7/8") 850 g.
M 9378 26.0 cm. (10 1/4") 762 g.
M 9379 21.0 cm. (8 1/4") 380 g.
M 9380 19.0 cm. (7 1/2") 320 g.
M 9381 16.0 cm. (6 1/4") 195 g.



WIDE RIM PLATE
M 9389 22.5 cm. (8 7/8") 525 g.



ROUND DEEP PLATE (THICK RIM)
M 9373 28.0 cm. (11 1/8") 986 g.
M 9374 24.0 cm. (9 1/2") 655 g.
M 9373-L COVER 400 g.



ROUND DEEP PLATE
M 9382 28.0 cm. (11 1/8") 980 g.
M 9383 24.0 cm. (9 1/2") 659 g.



ROUND COUPE PLATTER
M 9306 41.0 cm. (16 1/8") 2,400 g.
M 9307 35.0 cm. (13 3/4") 1,475 g.
M 9308 31.5 cm. (12 3/8") 1,255 g.
M 9375 30.0 cm. (11 3/4") 920 g.



ROUND COUPE PLATE
M 9301 28.0 cm. (11 1/8") 820 g.
M 9302 26.0 cm. (10 1/4") 730 g.
M 9303 21.0 cm. (8 1/4") 460 g.
M 9304 18.0 cm. (7 1/8") 270 g.
M 9305 16.5 cm. (6 1/2") 268 g.



ROUND DEEP PLATTER
M 9309 39.5 cm. (15 1/2") 2,410 g.
M 9310 36.0 cm. (14 1/8") 1,790 g.



COUPE PLATE
M 9388 22.5 cm. (8 7/8") 515 g.



PASTA PLATE
M 9385 30.0 cm. (11 7/8") 1,200 g.



ROUND SOUP PLATE
M 9384 22.0 cm. (8 5/8") 584 g.



SALAD BOWL
M 9318 23.0 X 28.5 cm.
(9 1/8" X 11") 1,030 g.
M 9319 19.5 X 26.0 cm.
(7 5/8" X 10 1/8") 770 g.
M 9320 17.5 X 23.0 cm.
(6 7/8" X 9 1/8") 680 g.



SOUP BOWL
M 9311 18.5 X 23.5 cm.
(7 1/4" X 9 1/4") 550 g.



SOUP BOWL WITH LID
M 9312/L 17.5 X 22.5 cm.
(6 7/8" X 9") 816 g.



SOUP BOWL WITH LID
M 9312 / M 9394-L 17.5 X 22.5 cm.
(6 7/8" X 9") 817 g.



BOWL
M 9321 18.0 cm. (7 1/8") 682 g.
M 9322 15.0 cm. (5 7/8") 389 g.



RICE BOWL
M 9361 10.5 cm. (4 1/8") 192 g.



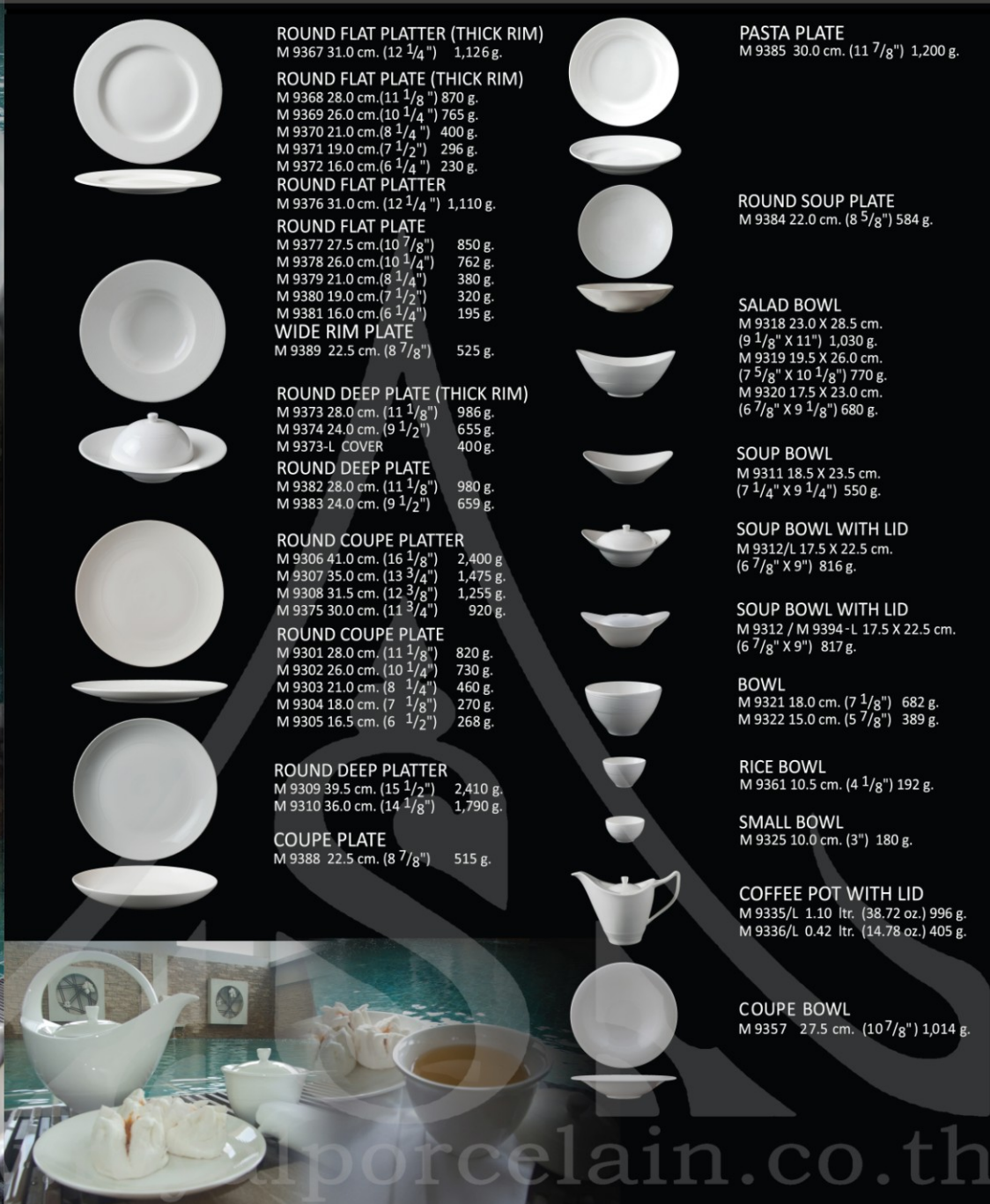
SMALL BOWL
M 9325 10.0 cm. (3") 180 g.



COFFEE POT WITH LID
M 9335/L 1.10 ltr. (38.72 oz.) 996 g.
M 9336/L 0.42 ltr. (14.78 oz.) 405 g.



COUPE BOWL
M 9357 27.5 cm. (10 7/8") 1,014 g.





TEA POT WITH LID
M 9337/L 1.13 ltr. (39.77 oz.) 1,014 g.



GRAVY BOAT
M 9342 0.42 ltr. (14.78 oz.) 326 g.
GRAVY BOAT STAND
M 9343 14.0 X 22.5 cm.
(5 1/2" X 8 7/8") 324 g.



SAUCE BOAT
M 9397 0.09 ltr. (3.17 oz.) 112 g.
M 9398 0.19 ltr. (6.69 oz.) 182 g.



CREAMER
M 9338 0.30 ltr. (10.38 oz.) 250 g.
M 9339 0.11 ltr. (3.87 oz.) 133 g.
M 9390 0.21 ltr. (7.22oz.) 244 g.
M 9396 0.17 ltr. (5.98 oz.) 181 g.



SUGAR BOWL WITH LID
M 9340/L 0.25 ltr. (8.80 oz.) 315 g.

COFFEE CUP
M 9330 0.25 ltr. (8.80 oz.) 205 g.
M 9331 0.20 ltr. (7.04 oz.) 175 g.
COFFEE CUP SAUCER
M 9332 15.0 cm. (5 7/8") 195 g.



ESPRESSO CUP
M 9333 0.11 ltr. (3.87 oz) 97 g.
ESPRESSO CUP SAUCER
M 9334 13.0 cm. (5 1/8") 145 g.



COFFEE CUP STACKABLE
M 9363 0.19 ltr. (6.68 oz.) 171 g.
M 9364 0.24 ltr. (8.45 oz.) 195 g.

COFFEE CUP SAUCER
M 9332 15.0 cm. (5 7/8") 195 g.

ESPRESSO CUP STACKABLE
M 9362 0.10 ltr. (3.52 oz) 98 g.

ESPRESSO CUP SAUCER
M 9334 13.0 cm. (5 1/8") 145 g.



RECTANGLE PLATE
M 9395 22.5 X 33.0 cm.
(8 7/8" X 13 1/8") 945 g.



SOUP CUP 2 HDLS STACKABLE
M 9326 0.32 ltr. (11.26 oz.) 248 g.



SOUP CUP 2 HDLS STACKABLE
M 9399 0.35 ltr. (12.32 oz.) 280 g.



SOUP CUP 2 HDLS NON STACKABLE
M 9365 0.32 ltr. (11.26 oz.) 255 g.



CHINESE TEA CUP WITH LID
M 9328/L 0.15 ltr. (5.28 oz.) 190 g.



CHINESE TEA CUP SAUCER
M 9329 11.0 cm. (4 3/8") 95 g.



SOUP TUREEN WITH LID
M 9344/L 2.45 ltr. (86.24 oz.) 2,279 g.

CASSEROLE WITH LID
M 9345/L 3.0 ltr. (105.6 oz.) 2,320 g.
M 9346/L 2.3 ltr. (80.96 oz.) 1,830 g.
CASSEROLE WITH COVER
CASSEROLE/STACKABLE
M 9345/M 9392L 3.0 ltr. (105.6 oz.) 2,429 g.



SAUCE DISH WITH DIVISION
M 9358 9.5 X 17.0 cm.
(3 3/4" X 6 3/4") 149 g.



SERVING TRAY
M 9359 10.5 X 31.5 cm.
(4 1/8" X 12 3/8") 339 g.



CONDIMENT BOWL WITH LID
M 9347/L 0.095 ltr. (3.34 oz.) 164 g.



SQUARE PLATE
M 9431 30.0 X 30.0 cm.
(11 3/4" X 11 3/4") 1,287 g.
M 9432 26.5 X 26. cm.
(10 1/2" X 10 1/2") 900 g.
M 9433 21.0 X 21.0 cm.
(8 1/4" X 8 1/4") 538 g.
M 9434 18.5 X 18.5 cm.
(7 1/4" X 7 1/4") 380 g.
M 9435 16.0 X 16.0 cm.
(6 1/4" X 6 1/4") 255 g.



VINEGAR / SOYA SAUCE POT WITH LID
M 9348/L 0.16 ltr. (5.45 oz.) 153 g.



MUG
M 9341 0.35 ltr. (12.14 oz.) 295 g.
M 9300 0.35 ltr. (12.32 oz.) 300 g.



STACKING MUG
M 9387 0.335 ltr. (11.792 oz.) 360 g.



SAUCE DISH
M 9349 10.0 cm. (3 7/8 ") 68 g.
M 9350 8.0 cm. (3 1/8 ") 57 g.



SUGAR PACK HOLDER
M 9360 7.0 X 10.0 cm.
(2 3/4" X 4 ") 110 g.



OVAL PLATTER
M 9391 25.0 X 35.0 cm.
(9 7/8" X 13 3/4") 1,060 g.



OVAL RIM DEEP PLATTER
M 9313 33.0 X 45.0 cm.
(13" X 17 3/4") 1,945 g.



OVAL DEEP PLATE
M 9314 29.5 X 40.0 cm.
(11 5/8" X 15 3/4") 1,510 g.



LONG TRAY
M 9315 22.5 X 32.0 cm.
(8 7/8" X 12 3/4") 930 g.

PICKLE DISH
M 9316 14.0 X 22.5 cm.
(5 1/2" X 8 7/8 ") 312 g.



CEREAL BOWL
M 9323 15.0 X 19.5 cm.
(5 7/8" X 7 5/8") 345 g.



FRUIT BOWL
M 9386 11.0 X 13.5 cm.
(4 3/8" X 5 3/8") 180 g.



FRUIT BOWL
M 9324 12.5 X 15.0 cm.
(4 7/8" X 5 7/8") 225 g.



APPETIZER / SAUCER
M 9327 12.5 X 16.5 cm.
(4 7/8" X 6 1/2") 175 g.



SPOON (L)
M 9351 4.5 X 17.0 cm.
(1 3/4" X 6 3/4") 55 g.



SPOON (M)
M 9352 4.5 X 15.5 cm.
(1 3/4" X 6 1/8") 48 g.



SPOON REST
M 9353 5.5 X 10.0 cm.
(2 1/8" X 4 ") 51 g.



CHOPSTICKS REST
M 9354 2.5 X 6.5 cm.
(1" X 2 1/2") 20 g.

SALT SHAKER
M 9355 6.0 cm. (2 3/8") 50 g.
PEPPER SHAKER
M 9356 6.0 cm. (2 3/8") 50 g.



Items and Description

www.royalporcelain.com